

EEF1B2 Antibody (Center)
Purified Rabbit Polyclonal Antibody (Pab)
Catalog # AW5048**Specification**

EEF1B2 Antibody (Center) - Product Information

Application	FC, IF, IHC-P, WB,E
Primary Accession	P24534
Other Accession	O9YGQ1
Reactivity	Human
Predicted	Chicken
Host	Rabbit
Clonality	Polyclonal
Calculated MW	H=25 KDa
Isotype	Rabbit IgG
Antigen Source	HUMAN

EEF1B2 Antibody (Center) - Additional Information**Gene ID** 1933**Antigen Region**
54-86**Other Names**

Elongation factor 1-beta, EF-1-beta, EEF1B2, EEF1B, EF1B

DilutionFC~~1:25
IF~~1:25
IHC-P~~1:25
WB~~1:1000**Target/Specificity**

This EEF1B2 antibody is generated from a rabbit immunized with a KLH conjugated synthetic peptide between 54-86 amino acids from the Central region of human EEF1B2.

Format

Purified polyclonal antibody supplied in PBS with 0.09% (W/V) sodium azide. This antibody is purified through a protein A column, followed by peptide affinity purification.

Storage

Maintain refrigerated at 2-8°C for up to 2 weeks. For long term storage store at -20°C in small aliquots to prevent freeze-thaw cycles.

Precautions

EEF1B2 Antibody (Center) is for research use only and not for use in diagnostic or therapeutic procedures.

EEF1B2 Antibody (Center) - Protein Information

Name EEF1B2

Synonyms EEF1B, EF1B

Function

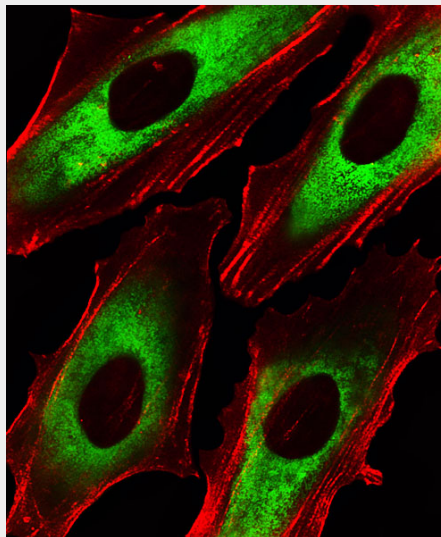
Catalytic subunit of the guanine nucleotide exchange factor (GEF) (eEF1B subcomplex) of the eukaryotic elongation factor 1 complex (eEF1) (By similarity). Stimulates the exchange of GDP for GTP on elongation factor 1A (eEF1A), probably by displacing GDP from the nucleotide binding pocket in eEF1A (By similarity).

EEF1B2 Antibody (Center) - Protocols

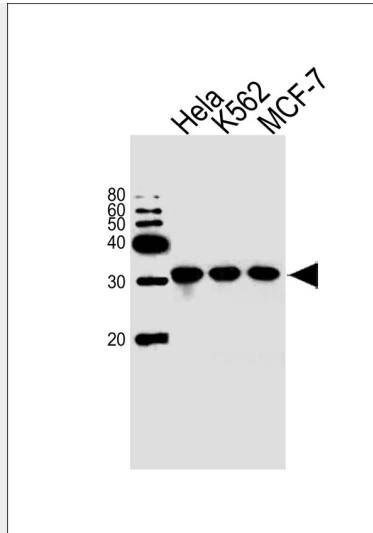
Provided below are standard protocols that you may find useful for product applications.

- [Western Blot](#)
- [Blocking Peptides](#)
- [Dot Blot](#)
- [Immunohistochemistry](#)
- [Immunofluorescence](#)
- [Immunoprecipitation](#)
- [Flow Cytometry](#)
- [Cell Culture](#)

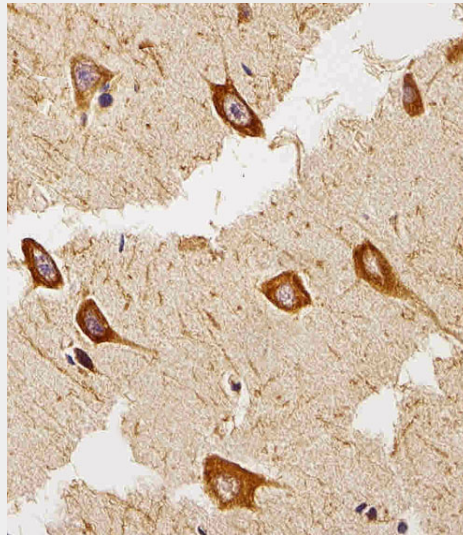
EEF1B2 Antibody (Center) - Images



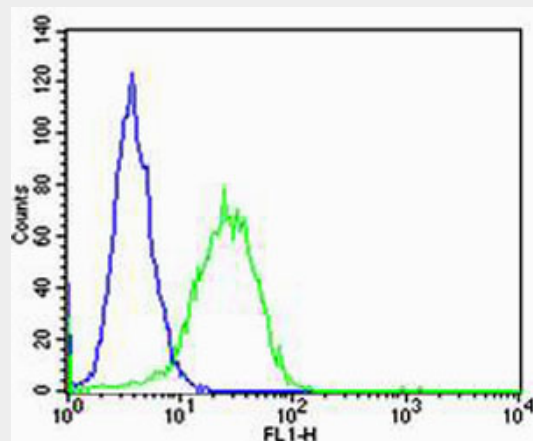
Fluorescent image of HeLa cells stained with EEF1B2 Antibody (Center)(Cat#AW5048). AW5048 was diluted at 1:25 dilution. An Alexa Fluor 488-conjugated goat anti-rabbit IgG at 1:400 dilution was used as the secondary antibody (green). Cytoplasmic actin was counterstained with Alexa Fluor® 555 conjugated with Phalloidin (red).



Western blot analysis of lysates from HeLa, K562, MCF-7 cell line (from left to right), using EEF1B2 Antibody (Center)(Cat. #AW5048). AW5048 was diluted at 1:1000 at each lane. A goat anti-rabbit IgG H&L(HRP) at 1:10000 dilution was used as the secondary antibody.



Immunohistochemical analysis of paraffin-embedded H. brain section using EEF1B2 Antibody (Center)(Cat#AW5048). AW5048 was diluted at 1:25 dilution. A peroxidase-conjugated goat anti-rabbit IgG at 1:400 dilution was used as the secondary antibody, followed by DAB staining.



Flow cytometric analysis of Hela cells using EEF1B2 Antibody (Center)(green, Cat#AW5048) compared to an isotype control of rabbit IgG(blue). AW5048 was diluted at 1:25 dilution. An Alexa Fluor® 488 goat anti-rabbit IgG at 1:400 dilution was used as the secondary antibody.

EEF1B2 Antibody (Center) - Background

EF-1-beta and EF-1-delta stimulate the exchange of GDP bound to EF-1-alpha to GTP.

EEF1B2 Antibody (Center) - References

Sanders J.,et al.Nucleic Acids Res. 19:4551-4551(1991).
von der Kammer H.,et al.Biochem. Biophys. Res. Commun. 177:312-317(1991).
Kalnine N.,et al.Submitted (MAY-2003) to the EMBL/GenBank/DDBJ databases.
Ebert L.,et al.Submitted (JUN-2004) to the EMBL/GenBank/DDBJ databases.
Ota T.,et al.Nat. Genet. 36:40-45(2004).